

Figure 2a
Project Layout Map Series

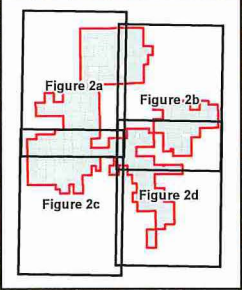
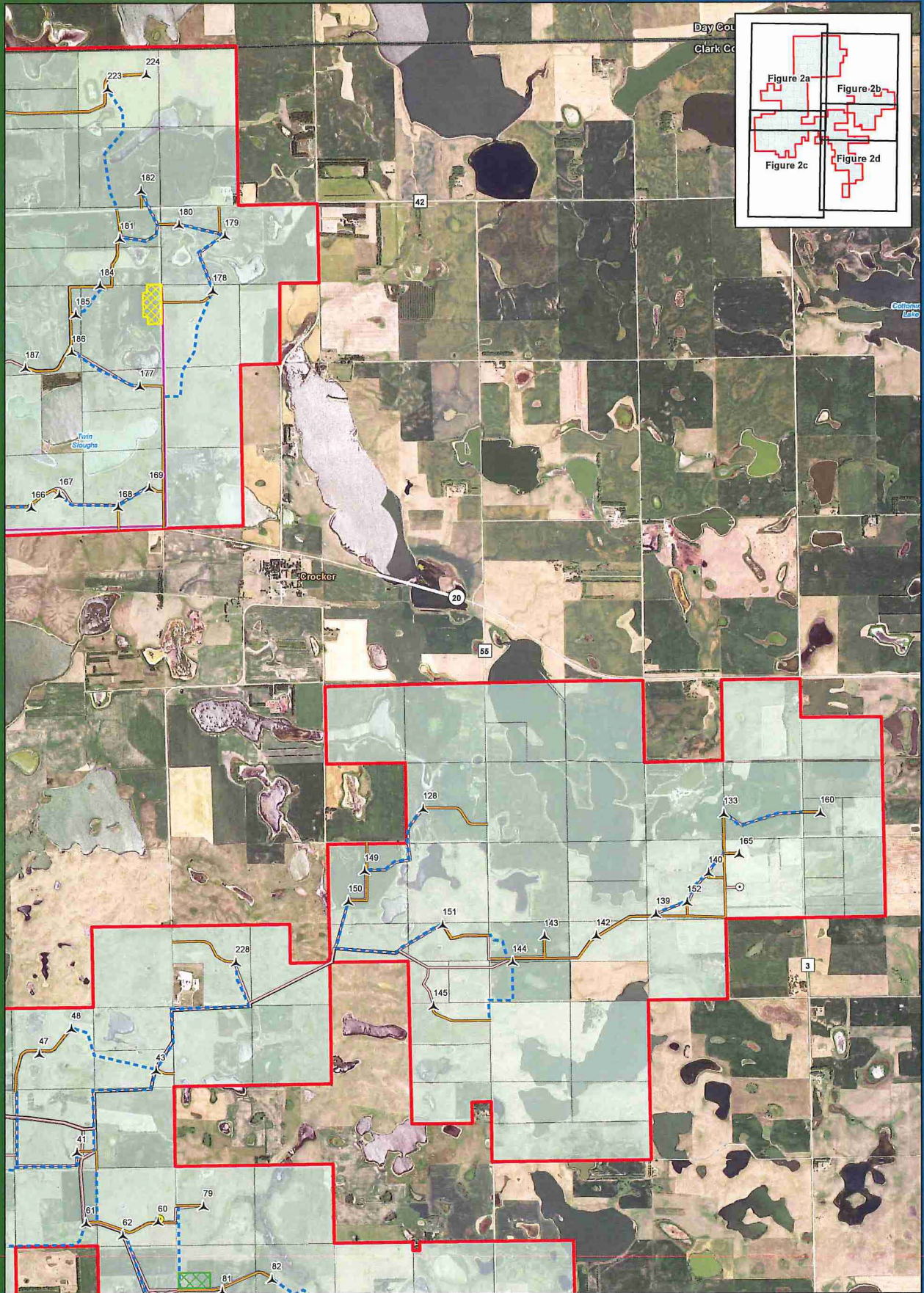
Crocker Wind Farm
Clark County, SD
45.079602, -97.845696
CROCKER000561
03/12/2018

- ▲ Preliminary Turbine Location
- Temporary Met Tower
- Preliminary Permanent Met Tower
- ▭ Project Area Boundary
- ▨ Project Substation
- ▩ O&M Facility
- ▧ Interconnect Switchyard
- ▦ Preliminary Slaging Area
- Interconnection 345 KV Transmission Line
- Preliminary Collection Line
- Preliminary Access Road
- - - Preliminary Crane Path
- Participating Landowners

Note: Turbine numbering

Imagery Source: 2015 Color FSA
Data Source: Geoname Energy, US Census, SD DOT
Document Path: Z:\CROCKER\MapSeries\Crocker\Final_PrimE\MapSeries\Layout_X\Figures\2_Fig2a_Layout_Detailed.mxd

EXHIBIT
I-51
PENGAD 800-631-6989



0 0.3 0.6 1.2
Miles

Figure 2b
Project Layout Map Series

Crocker Wind Farm
Clark County, SD
45.079602, -97.845696

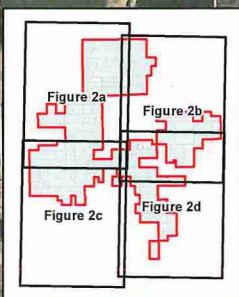
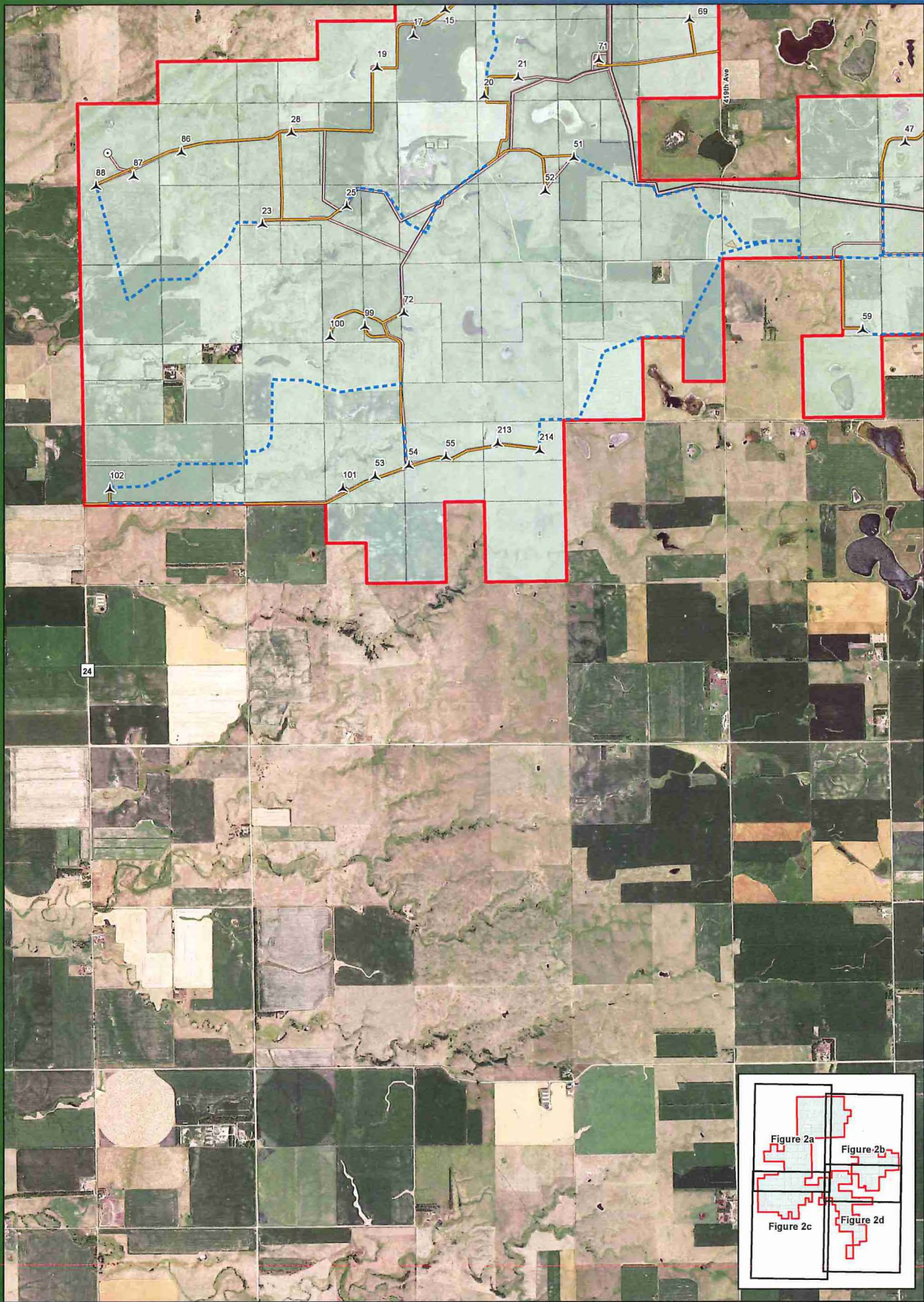
CROCKER000562

03/12/2018

- ▲ Preliminary Turbine Location
- Temporary Met Tower
- Preliminary Permanent Met Tower
- Project Area Boundary
- Project Substation
- O&M Facility
- Interconnect Switchyard
- Preliminary Staging Area
- Interconnection 345 kV Transmission Line
- Preliminary Collection Line
- Preliminary Access Road
- - - Preliminary Crane Path
- Participating Landowner

Note: Turbine numbering is not sequential.

Imagery Source: 2015 Color FSA
Date Source: Geronimo Energy, US Census, SD DOT
Document Path: Z:\Client\NE_H\Geronimo\Crocker\AUC_Facility_Terminal\Map\Layout_X\Fig2b_2_Project_Layout_Default.mxd



Imagery Source: 2015 Color FSA
 Data Source: Geotitles Energy, US Census, SD DOT

Document Path: Z:\GIS\K&E_H\GIS\crocker\Crocker\Facility_Permit\Mapping\crocker_A\Figures_2\Project_Layout_Detailed.mxd

Figure 2c
Project Layout Map Series

Crocker Wind Farm
 Clark County, SD
 45.079602, -97.845696

CROCKER000563

03/12/2018

- | | |
|-----------------------------------|--|
| ▲ Preliminary Turbine Location | — Interconnection 345 kV Transmission Line |
| ● Temporary Met Tower | — Preliminary Collection Line |
| ○ Preliminary Permanent Met Tower | — Preliminary Access Road |
| □ Project Area Boundary | - - - Preliminary Crane Path |
| ⊠ Project Substation | □ Participating Landowner |
| ⊞ O&M Facility | |
| ⊞ Interconnect Switchyard | |
| ⊞ Preliminary Staging Area | |

Note: Turbine numbering is not sequential.

Issue Date: 3/28/2018

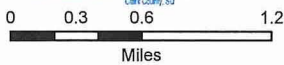
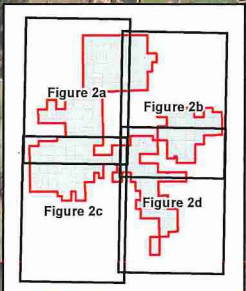
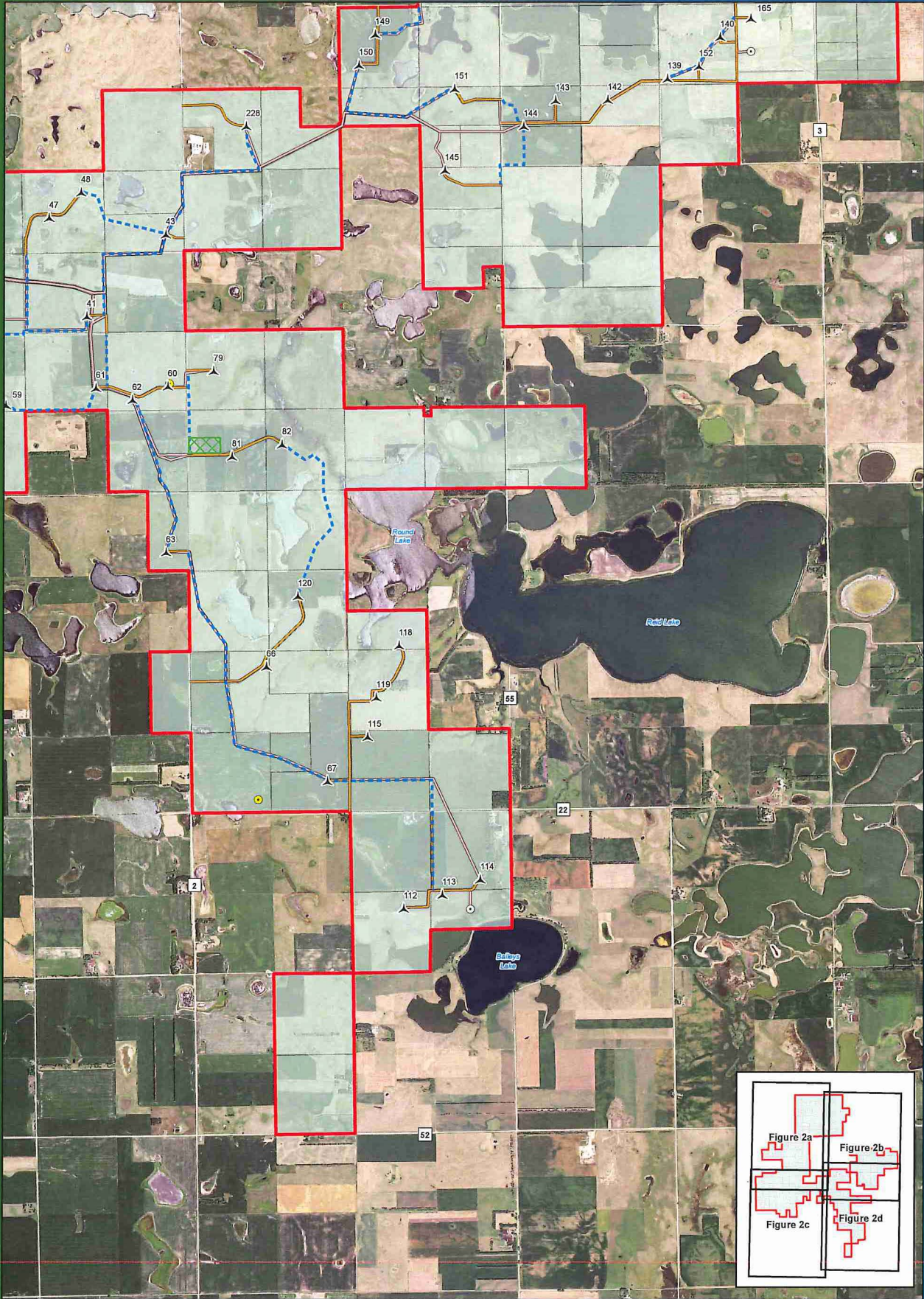


Figure 2d
Project Layout Map Series

Crocker Wind Farm
Clark County, SD
45.079602, -97.845696

CROCKER000564

03/12/2018

- ▲ Preliminary Turbine Location
- Temporary Met Tower
- Preliminary Permanent Met Tower
- Project Area Boundary
- Project Substation
- ▨ O&M Facility
- ▩ Interconnect Switchyard
- ▧ Preliminary Staging Area
- Interconnection 345 kV Transmission Line
- Preliminary Collection Line
- Preliminary Access Road
- - - Preliminary Crane Path
- Participating Landowner

Note: Turbine numbering is not sequential.